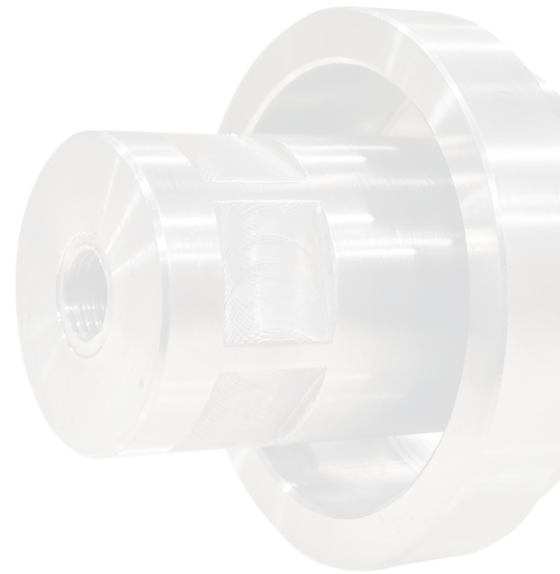


# Eurosonic

## Titanium Booster

20Khz



## Technical Data

◆ <b>Model</b>	<b>Eurosonic</b>
◆ <b>Brand</b>	<b>Eurosonic</b>
◆ <b>Technology</b>	<b>Ultrasonic</b>
◆ <b>Accuracy</b>	<b>Good</b>
◆ <b>Efficiency</b>	<b>Excellence</b>
◆ <b>Frequency</b>	<b>20Khz</b>
◆ <b>Power</b>	<b>2000 to 3000Watt</b>
◆ <b>Weight</b>	<b>2.8 – 3.2 kg</b>



## Features

- ◆ Designed to work effectively with heavy-duty 2000 W to 3000 W ultrasonic systems.
- ◆ Precisely tuned to resonate at 20 kHz, ensuring efficient energy transmission.
- ◆ High fatigue resistance and corrosion resistance for long service life.
- ◆ Optimizes amplitude matching between converter and sonotrode.
- ◆ Rotational symmetry reduces vibration loss and improves stability under load.
- ◆ Depending on specific unit, boosters can increase or decrease amplitude according to application needs.



## Description

- ◆ The Eurosonic Titanium Booster for 20 kHz systems is a precision ultrasonic amplitude booster crafted to improve the energy transfer from the ultrasonic converter to the sonotrode (horn). Manufactured by EUROSONIC Ultraschall GmbH & Co. KG, this solid-mount titanium booster is engineered for high-power industrial ultrasonic applications ranging from 2000 W up to 3000 W. Titanium ensures exceptional fatigue strength, corrosion resistance, and durability under continuous operation. The booster is tuned for 20 kHz ultrasonic frequency and optimized to maintain low attenuation and precise amplitude matching in the oscillating stack.

