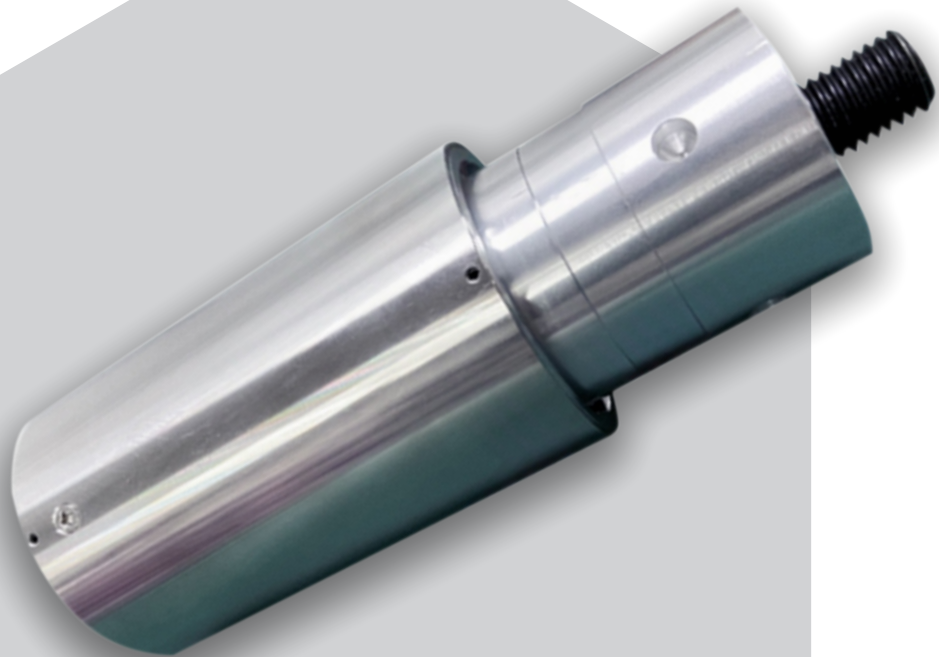


RINCO

Converter / Transducer

20Khz



Technical Data

◆ Modal	EDP - C20-10
◆ Brand	Rinco
◆ Technology	Ultrasonic
◆ Accuracy	Good
◆ Efficiency	Excellence
◆ Power	3000Watt
◆ Frequency	20Khz
◆ Weight	2.3 kg



Features

- ◆ Genuine Rinco OEM replacement converter
Optimized for 20 kHz frequency with 3000 W output
Superior vibration stability for strong, accurate welds
High thermal resistance for continuous operation
Durable construction and easy maintenance design



Description

- ◆ We offer the **Rinco Converter / Transducer C20-10**, a high-quality OEM replacement part designed for Rinco ultrasonic welding systems. Engineered for maximum power and efficiency, this converter delivers excellent energy transfer, stable vibration output, and superior weld consistency. Ideal for heavy-duty industrial applications including ultrasonic welding, sealing, and cutting operations.

